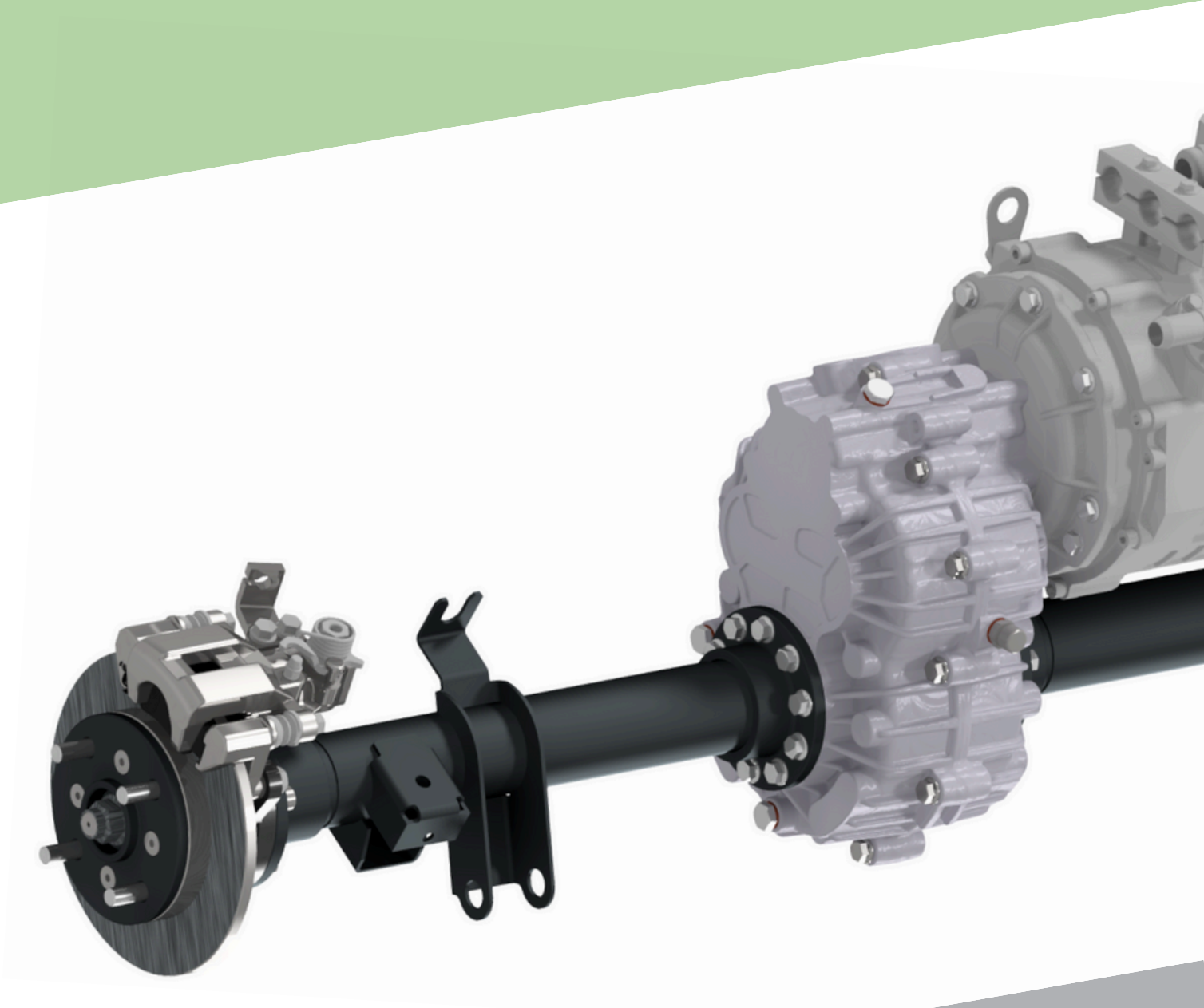


CATALOG 2024

Rear axles, transmissions and
accessories for electric vehicles



THE HISTORY

The origins of Gimec Trasmissioni date back to the 1960s, when a small artisan company began the overhaul and repair of gearboxes.

In a few years the business expanded to the construction of gearboxes applied to the endothermic engines then used on agricultural and construction machinery.

In the following years, the company received new impulses with the acquisition of new CNC machine tools to improve the quality and continuity of processing, whilst always increasing its decades of experience.

At the end of the 90s the company name was defined as the current GIMEC Trasmissioni Srl.

At the same time, careful commercial activity has led the company to work with important customers throughout Europe and in some non-European countries.

In this continuous path of growth GIMEC has maintained its characteristic flexibility which allows it to design and realize specific solutions for customer needs, and to guarantee constant service to customers.



PRODUCTION

In 2018 Gimec purchased a new and larger headquarters, where the various company departments find adequate space: such as CNC turning and milling, welding, assembly and testing.



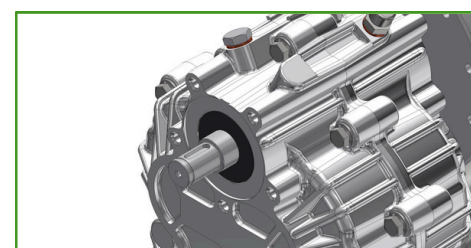
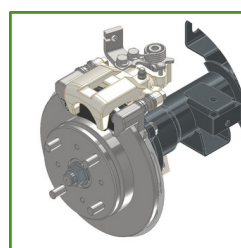
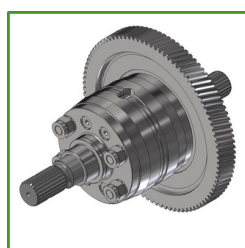
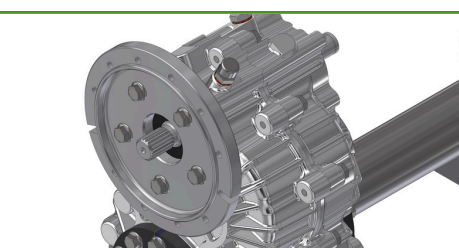
Gimec is a highly specialized company in the design and manufacturing of gearboxes for vehicles (electric, industrial and agricultural) and other components (gearboxes, transmissions, inverters, etc.).

Our machine tools allow us to create products that reflect the highest standards of designs and quality.

Gimec has worked and works with important Italian and foreign industrial companies: this has led us to acquire very high competence.



Our mission is to design and realize highly customized solutions starting from requirements by our customers.



OUR PRODUCTS

MODELS:

EC05 Electric Car 05 - max 0.35T*

EC1 Electric Car 1 - max 0.8T*

EC2 Electric Car 2 - max 1.2T*

EC3 Electric Car 3 - max 2.2T*

EC4 Electric Car 4 - max 1.8T*

EC260 Electric Car 260 - max 4.5T*

RM102E Transfer, Input Torque 200 Nm

RM225B Transfer, Input Torque 1800 Nm

RM225D Transfer, Input Torque 1800 Nm

RM225E Transfer, Input Torque 1800 Nm

T2000B Transfer, Input Torque 2000 Nm

T2000D Transfer, Input Torque 2000 Nm

T2500B Transfer, Input Torque 2500 Nm

T2500D Transfer, Input Torque 2500 Nm

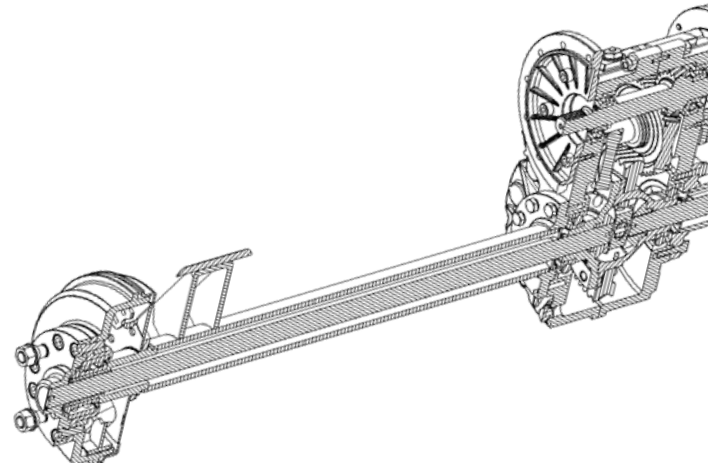
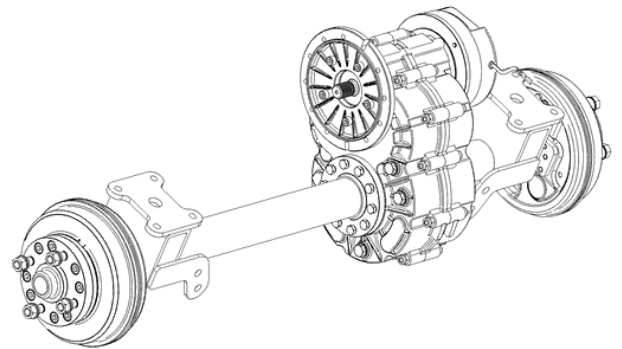
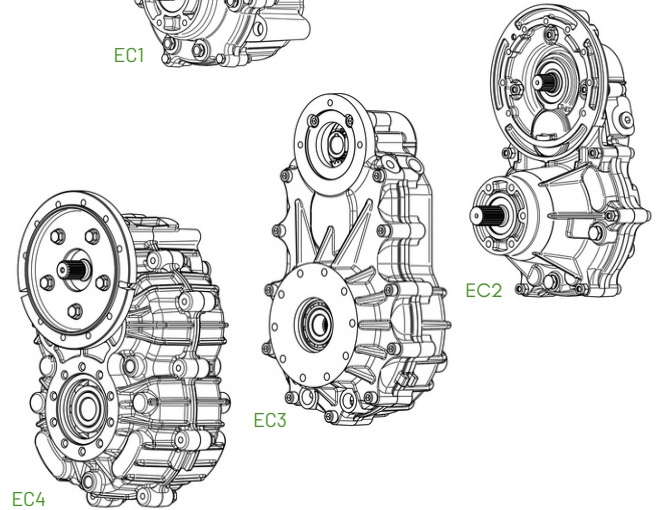
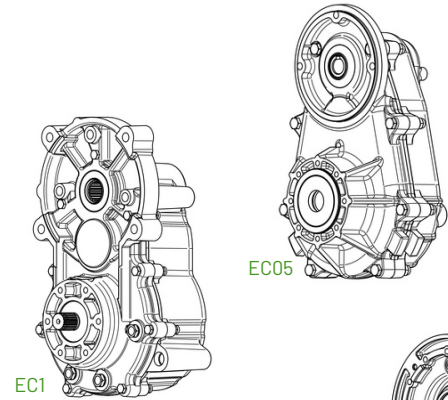
*maximum load for rigid axle

ENGINEERING TO ORDER:

We are able to design and realize non-standard axles solutions and applications as (manual locking differentials, self-locking differentials, power shift, toroidal speed variator).

ACCESSORIES:

- 1 Wheel Hub
- 2 Brake Cables
- 3 CV Joint
- 4 Speed Variators
- 5 Motor Wheels
- 6 Others



EC05

The smallest of our axles.

Designed for small, hand-driven electric trolleys.



TECHNICAL DATA

- Continuous torque to the wheels 280Nm
- Maximum wheel torque 400Nm
- Maximum entry speed 5000RPM
- Dynamic range 350Kg
- Maximum static flow 600Kg
- Weight da 25kg



REDUCTION RATIO

- 7:1
- 14:1
- 16:1
- 18:1
- 25:1
- 32:1



TRACK WIDTH

- A. from 300mm to 500mm
- B. from 501mm to 800mm
- C. from 801mm to 1350mm

EC1

Small-medium sized axle.

Designed for tractors and electric vehicles, and for transporting small loads.



TECHNICAL DATA

- Continuous torque to the wheels 450Nm
- Maximum wheel torque 500Nm
- Maximum entry speed 4000RPM
- Dynamic range 750Kg
- Maximum static flow 900Kg
- Weight da 30.5kg



REDUCTION RATIO

- 6:1
- 15:1
- 8:1
- 11:1
- 19:1



TRACK WIDTH

- A. from 300mm to 500mm
- B. from 501mm to 800mm
- C. from 801mm to 1350mm

EC2

Medium sized axle.

It is used for small construction and road machinery and golf carts.



TECHNICAL DATA

- Continuous torque to the wheels 600-1000Nm
- Maximum wheel torque 800-1200Nm
- Maximum entry speed 6000RPM
- Dynamic range 750Kg
- Maximum static flow 900Kg
- Weight da 33.5kg



R. SINGLE

- 7:1
- 14:1
- 16:1
- 18:1
- 25:1
- 32:1

R. DOUBLE

- 8:1 - 11:1
- 9:1 - 15:1
- 11:1 - 13:1
- 13:1 - 15:1



TRACK WIDTH

- A.** from 300mm to 500mm
- B.** from 501mm to 800mm
- C.** from 801mm to 1350mm

EC3

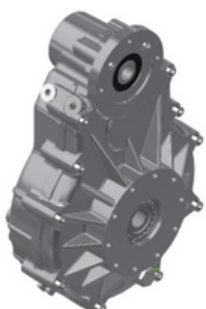
Heavy duty axle.

Designed for medium-sized electric forklifts and tractors.



TECHNICAL DATA

- Continuous torque to the wheels 1800Nm
- Maximum wheel torque 2500Nm
- Maximum entry speed 3000RPM
- Dynamic range 1800Kg
- Maximum static flow 2200Kg
- Weight da 80kg



REDUCTION RATIO

- 15:1
- 19:1

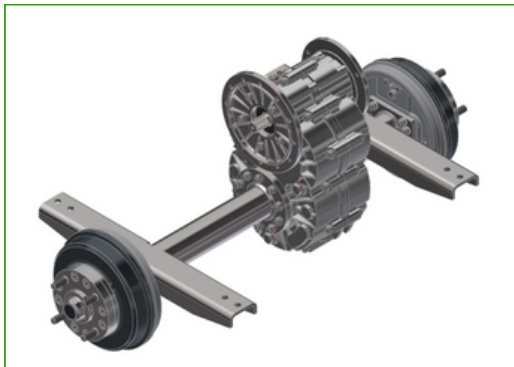


TRACK WIDTH

- A.** from 300mm to 500mm
- B.** from 501mm to 800mm
- C.** from 801mm to 1350mm

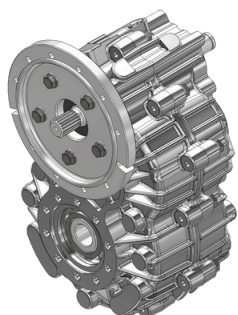
EC4

Axle designed for L7E electric road vehicles, golf cars, forklifts and electric tractors up to 7T towing.



TECHNICAL DATA

- Continuous torque to the wheels 1700Nm
- Maximum wheel torque 2000Nm
- Maximum entry speed 7000RPM
- Dynamic range 1650Kg
- Maximum static flow 1800Kg
- Weight da 50.5kg



REDUCTION RATIO

- 1:6
- 1:8
- 1:10
- 1:12
- 1:13
- 1:16
- 1:22
- 1:27
- 1:36



TRACK WIDTH

- A. from 300mm to 500mm
- B. from 501mm to 800mm
- C. from 801mm to 1350mm

EC260

Differential axle for electric traction designed for vehicles intended for urban transport and operating machines.



TECHNICAL DATA

- Continuous torque to the wheels 6000Nm
- Maximum wheel torque 7500Nm
- Maximum entry speed 6000RPM
- Dynamic range 4500Kg
- Maximum static flow 6500Kg
- Weight da 350kg

REDUCTION RATIO

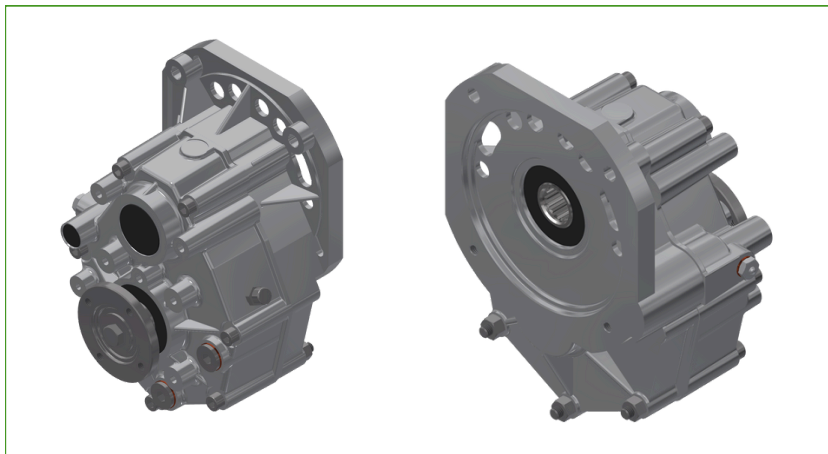
- 20:1
- 24:1

TRACK WIDTH

- A. from 300mm to 500mm
- B. from 501mm to 800mm
- C. from 801mm to 1350mm

RM102E

Small gearbox used for small electric road and agricultural vehicles and retro-fit of vehicles with internal combustion engines.



TECHNICAL DATA

- Maximum input torque
- Maximum output torque
- Maximum entry speed
- Weight

200Nm
1000Nm
6000RPM
da 20kg

REDUCTION RATIO

- 1:29
- 1:5
- 1:1,57
- 1:2,35
- 1:2,86
- 1:3,53

RM225B

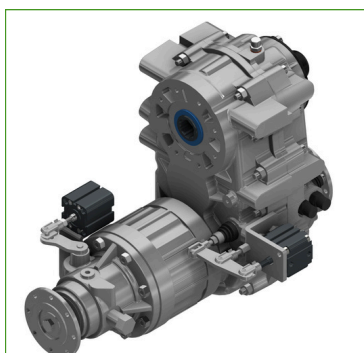
Reducer gearbox for endothermic engine with separate disengagement, slow and fast gear and PTO (4x4 traction engagement in slow and fast gear).

RM225D

Reducer gearbox for endothermic engine with differential, slow and fast gear and PTO (permanent 4x4 and differential lock).

RM225E

Reducer gearbox for bimodal, endothermic and electric vehicles (possibility of regenerating and recharging batteries).



TECHNICAL DATA

- Maximum input torque
- Maximum output torque
- Maximum entry speed
- Weight

1800Nm
6500Nm
6000RPM
da 65kg

REDUCTION RATIO

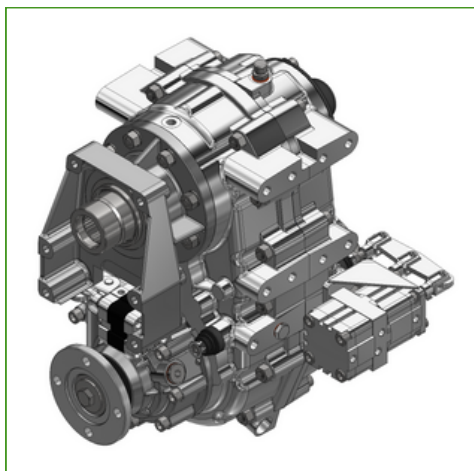
- 1:05
- 1:1
- 1:1,14
- 1:1,57
- 1:2
- 1:2,35
- 1:3.1
- 1:3,95

T2000B

Reducer gearbox for endothermic engine with separate disengagement, slow and fast gear and PTO (4x4 traction engagement in slow and fast gear).

T2000D

Reducer gearbox for endothermic engine with differential, slow and fast gear and PTO (permanent 4x4 and differential lock).



TECHNICAL DATA

- | | |
|-------------------------|---------|
| • Maximum input torque | 2200Nm |
| • Maximum output torque | 8000Nm |
| • Maximum entry speed | 6000RPM |
| • Weight | da 75kg |

REDUCTION RATIO

- 1:1,05
- 1:3,93

T2500B

Reducer gearbox for endothermic motorization with separate disengagement, slow and fast gear and PTO (permanent 4x4 and differential lock).

T2500D

Reducer gearbox for endothermic engine with differential, slow and fast gear and PTO (permanent 4x4 and differential lock).



TECHNICAL DATA

- | | |
|-------------------------|---------|
| • Maximum input torque | 2500Nm |
| • Maximum output torque | 10000Nm |
| • Maximum entry speed | 5000RPM |
| • Weight | da 90kg |

REDUCTION RATIO

- | | |
|----------|---------|
| • 1:1 | • 1:6 |
| • 1:1,14 | • 1:2,6 |
| • 1:1,3 | • 1:4 |

ACCESSORI

1 Wheel Hub

- Drive wheel hubs with drum brake.
- Drive wheel hubs with disc brake.
- Idler wheel hubs with drum brake.
- Idler wheel hubs with disc brake.



2 Brake Cables

- Brake cables for parking brakes.
- Brake cables for mechanical brake.



3 CV Joint

- CV joints for independent suspensions.



4 Speed Variators

- Belt speed variator.



5 Motor Wheels

- Light static loads.



APPLICAZIONI



- City Car



- Electric Street cleaner
- Electric tractors



- Golf Car



- Micro Electric Mobility



- Forklifts



- Tuk Tuk



- Agricultural vehicles
- Operating Machines



- Porter
- Electric Shuttles
- Mini Bus

MODULE

fill out the form below with your vehicle data to receive a technical evaluation.



Customer: _____
address: _____

Mail: _____
Note: _____

Gimec Trasmissioni S.r.l.

Via L. Ghiacci, 17 - 42019 - Scandiano (RE) - Italy
e-mail: ufficio.tecnico@gimec-trasmissioni.com
Cod.fisc. - P.Iva - Reg.impr. RE - IT 01783170358

VEHICLE DATA COLLECTION	
Product:	<input type="checkbox"/> Axles <input type="checkbox"/> Gearbox <input type="checkbox"/> Spare Parts <input type="checkbox"/> Other _____
Ground:	<input type="checkbox"/> Internal <input type="checkbox"/> External <input type="checkbox"/> Off-Road <input type="checkbox"/> Other _____
Max vehicle speed:	_____ km/h
Trackwidth:	_____ mm
Maximum slope:	<input type="checkbox"/> _____° <input type="checkbox"/> _____%
Drive:	<input type="checkbox"/> Front-wheel <input type="checkbox"/> Rear-wheel <input type="checkbox"/> Four-wheel <input type="checkbox"/> Other _____
Total vehicle weight (Empty):	_____ Kg
Total vehicle weight (Full Load):	_____ Kg
Empty weight on the axle:	_____ Kg
Full axle load weight:	_____ Kg
Gearbox inclination (Vertical = 0°):	_____°

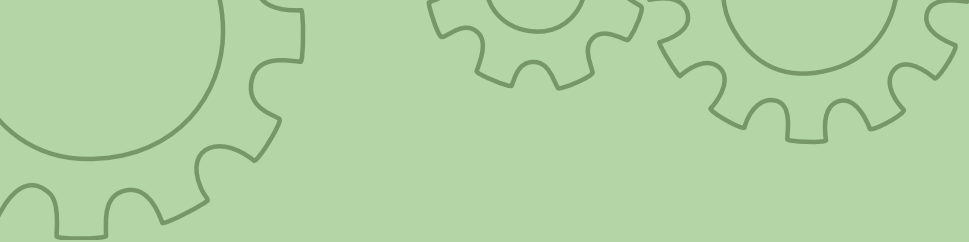
WHEEL DATA	
Tire diameter:	<input type="checkbox"/> \varnothing _____ mm <input type="checkbox"/> \varnothing _____ inch
Wheelbase wheel fixing:	<input type="checkbox"/> 3 Holes <input type="checkbox"/> 4 Holes <input type="checkbox"/> 5 Holes \varnothing _____ mm
Wheel studs/holes:	<input type="checkbox"/> M12x1.5 <input type="checkbox"/> M12x1.25 <input type="checkbox"/> M10x1.5 <input type="checkbox"/> Other _____
Rim centering:	\varnothing _____ mm

BRAKE DATA	
Brake:	<input type="checkbox"/> Drum <input type="checkbox"/> Disc <input type="checkbox"/> None <input type="checkbox"/> Other _____
Brake activation:	<input type="checkbox"/> Mechanical <input type="checkbox"/> Hydraulic <input type="checkbox"/> Both <input type="checkbox"/> Other _____
Brake cylinder:	<input type="checkbox"/> \varnothing 19 <input type="checkbox"/> \varnothing 20.6 <input type="checkbox"/> \varnothing 22 <input type="checkbox"/> Other _____

ELECTRIC MOTOR DATA (If available)	
Electric motor power:	_____ kW
Nominal torque:	_____ Nm
Maximum torque:	_____ Nm
Electric motor RPM - Nominal	_____ RPM
Electric motor RPM - Maximum	_____ RPM
Power supply voltage	_____ V

NOTE	
Gearbox/Axle data currently in use _____	
Data selected from catalogue _____	

* The aforementioned completed form must be forwarded to: ufficio.tecnico@gimec-trasmissioni.com



CONTATTI:

- acquisti@gimec-trasmissioni.com
- amministrazione@gimec-trasmissioni.com
- commerciale@gimec-trasmissioni.com
- qualita@gimec-trasmissioni.com
- ufficio.tecnico@gimec-trasmissioni.com

CODICE SDI M5UXCR1
C.F./P.IVA 01783170358